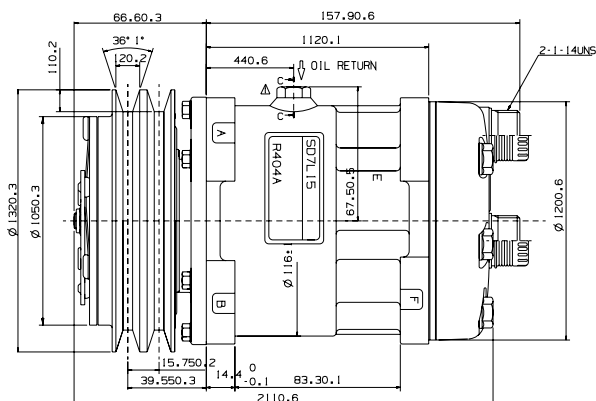


Compressors

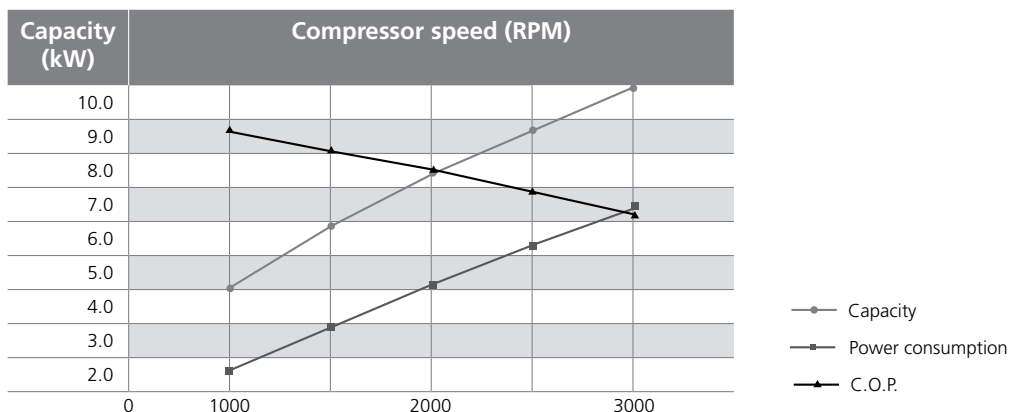
Sanden SD7L15



This compressor is equipped with 7 pistons, and it has (154 cm³) displacement/revolution. The reliability of this compressor is among the highest in the market. The compressor body is equipped with 8 "ears"; this feature, along with the mounting angle (+/-90°), allows for using the best mounting options. This SD7L15 compressor, is the version for R404a. The compressors are available with Rotalock ports (1" 14 UNS).

Compressors, Tensioning

Performance:



Technical specifications:

Parameters	Specification
Piston diameter (Ø, mm/inch)	29.3/1.15
Stroke (mm/inch)	32.8/1.29
Displacement (cm ³)	154.9 (9.5 cu. in.)
Dry weight (kg/lbs)	6.2
Number of cylinders	7
Max. allowable speed (RPM)	7,000
Max. allowable continuous speed (RPM)	6,000
Refrigerant	R404A

Order number	Type	Quantity (ml)
Oil		
62040599B	POE ISO 68	250